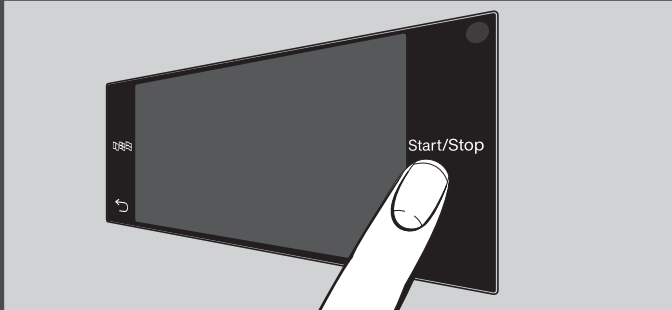


DRYER

Please read these instructions before using this machine and observe all warning and safety instructions.

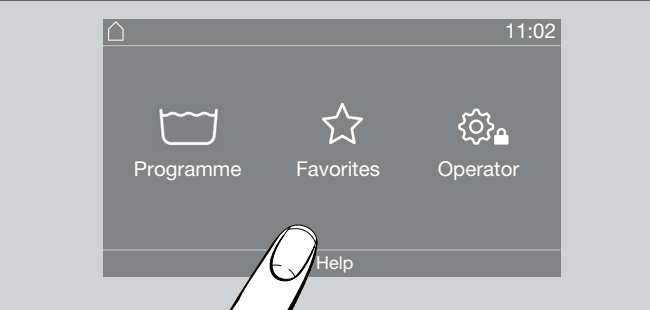
Touch display and symbols



Switch on: press button ①

Symbols , , *Start/Stop* and *display sensorkeys* respond to fingertips

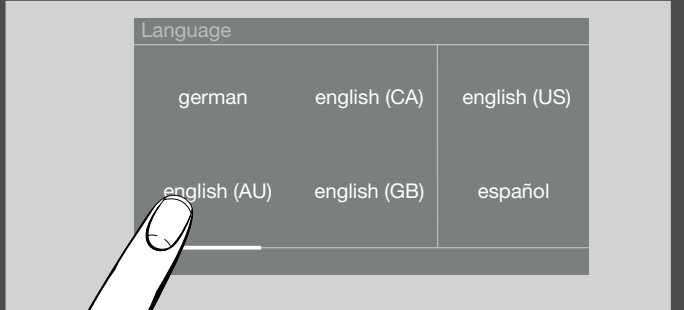
Help function



A help function can be displayed

- Touch *Help*
- Swipe from right to left on the display

Select language



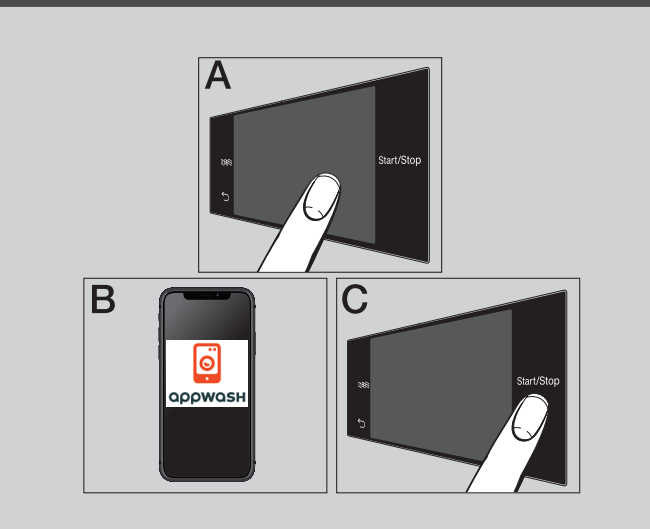
- Touch symbol
- Swipe from right to left on the display until the language of your choice appears
- Select language

1 Filling the drum



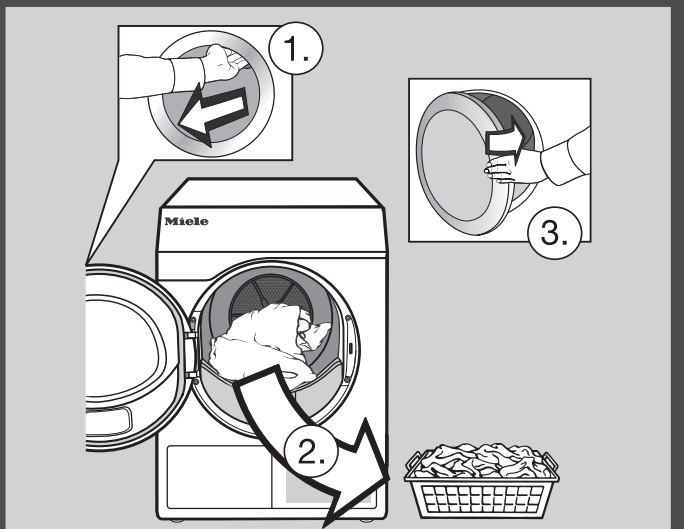
- = do not dry
- = regular/higher temperature
- = select extra option *Gentle Laundry care*
- Fill the drum

2 Selecting/starting programme



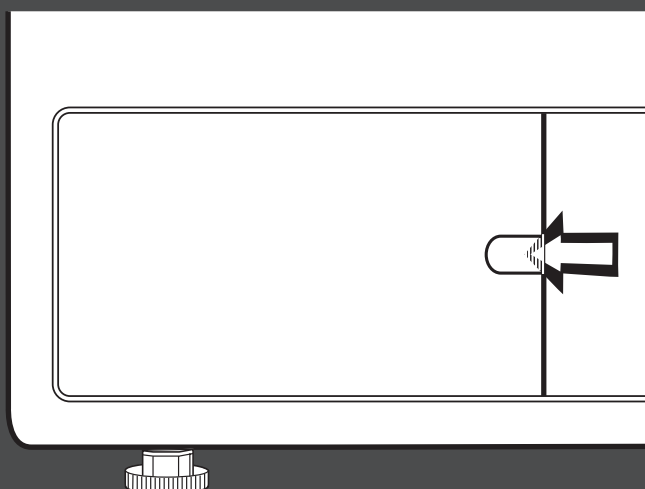
- Select programme (A)
- Select: Drying level or Duration, optionally Extra
- Follow the instructions for payment (B)
- Touch Start/Stop (C)

3 Emptying the drum

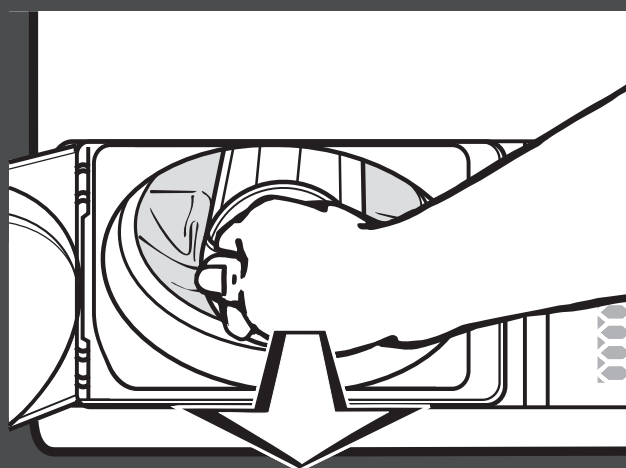


- *End* is shown in the display
- Unlock the door with *Start/Stop*
- Open the door and remove the laundry from the drum

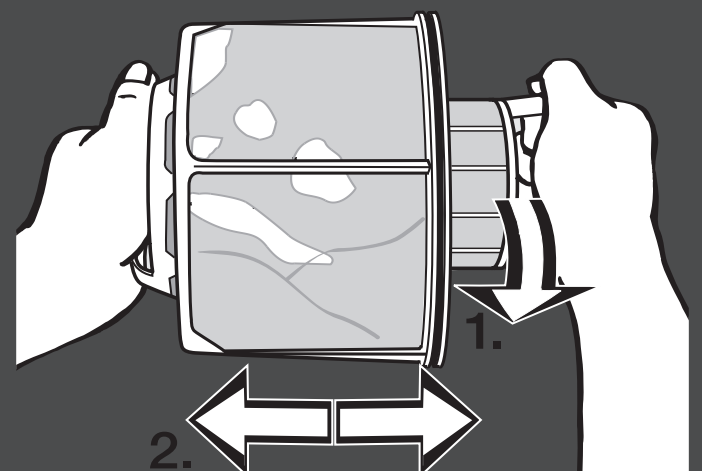
Cleaning (this procedure should be carried out daily or when the *Clean filter* reminder appears in the display)



- Confirm the reminder with *OK*
- Open the access panel



- Pull the fluff filter out by the handle



- Pull the two sections of the filter apart as shown
- Remove the fluff from the surface
- Reassemble the filter and push it back into its housing