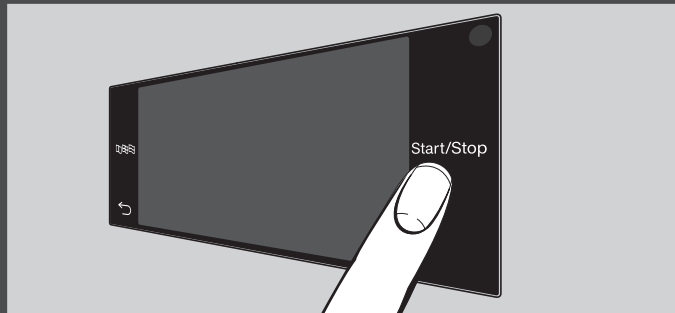


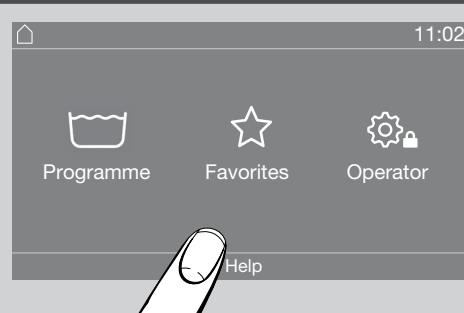
WASHING MACHINE

Please read these instructions before using this machine and observe all warning and safety instructions.

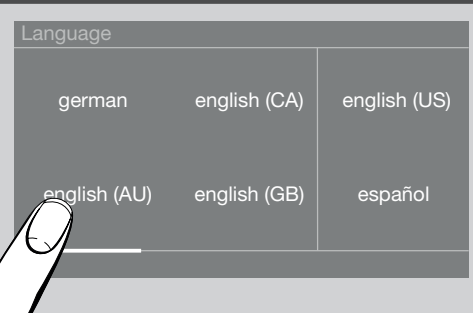
Touch display and symbols



Help function



Select language



Switch on: press button ①

Symbols , , **Start/Stop** and **display sensorkeys** respond to fingertips

A help function can be displayed

- Touch **Help**
- Swipe from right to left on the display

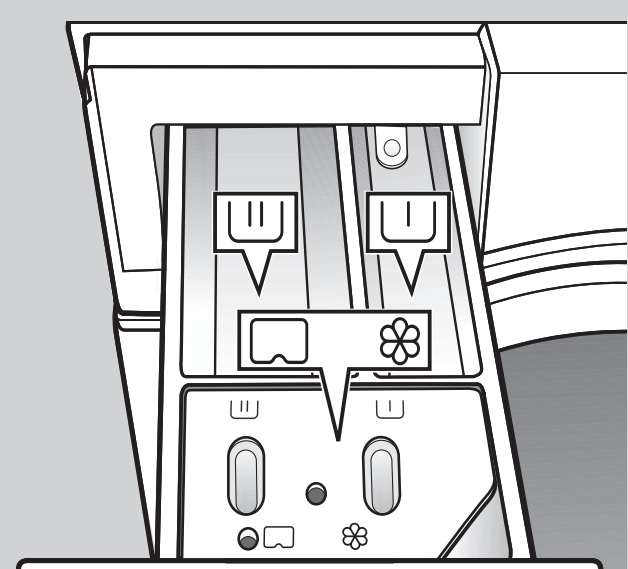
- Touch symbol
- Swipe from right to left on the display until the language of your choice appears
- Select language

1 Filling the drum



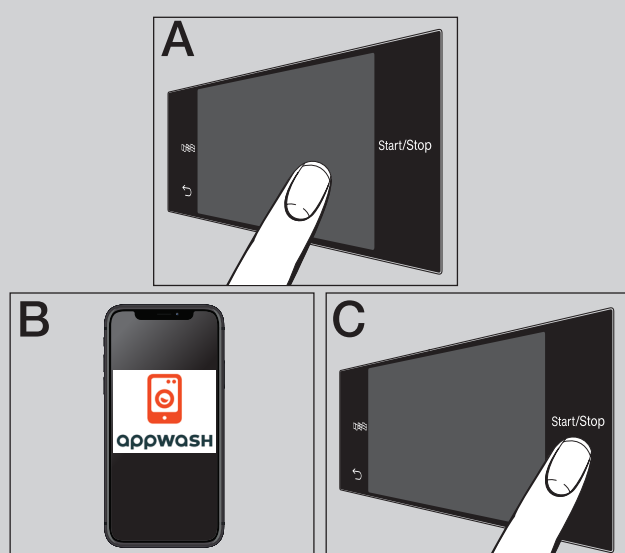
- Open the door
- Sort the laundry by colour and fabric care symbols and put it in the drum

2 Add detergent



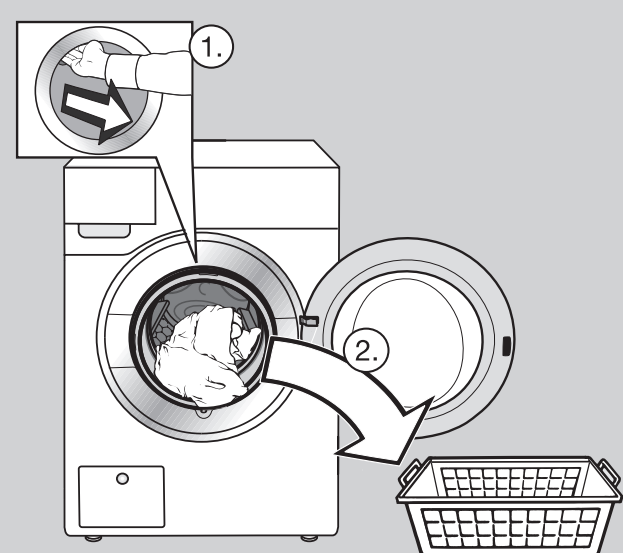
- Add your detergent into the machine
- Close the door with a slight swing. Make sure no pieces of laundry are caught between the door and the drum

3 Selecting and starting programme



- Select programme (A)
- Select: Temperature and Spin speed, optionally Extra
- Follow the instructions for payment (B)
- Touch Start/Stop (C)

4 Emptying the drum



- **Anti-crease action/End** in the display is shown
- Unlock the door with **Start/Stop**
- Open the door and remove the laundry from the drum